

The Scoop News
1161 Hillview Dr.
Hastings, MI 49058



The Scoop Southwest Michigan Seek and Search Club

September 2024 - Edition

When: The Third Tuesday of Each Month at 7 P.M.

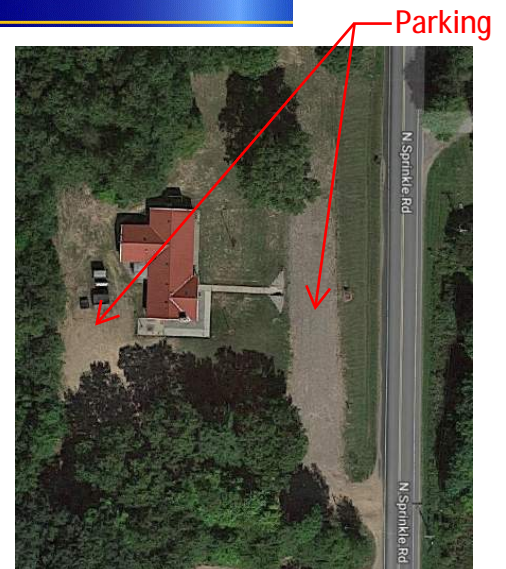
Who: Meetings are open to the public

Where: Kalamazoo Rod & Gun Club
7533 North Sprinkle Road, Kalamazoo, MI 49004

How: From U.S. 131 come North to D Ave. take D Ave. East to North Sprinkle (road curves right and heads south), club is .25 miles on the right from int. of D. Ave. and Sprinkle.

Or

Take U.S. 131 South to D. Ave. exit, take D. Ave. East to N. Sprinkle (directions from here same as Northbound (above)).



July 2024 - Finds of the Month

WINNER...#3 Kerry S.



JEWELRY

Entries:

1. Antique sterling sliver ring - Mike W.
2. Huge turtle ring - John M.
3. 14K 2 tone gold ring - Kerry S.

WINNER...#5 Mike W.



COIN

Entries:

1. No date memorial penny, almost gone! - John M.
2. 1854 O Seated Liberty half dime - Rick S.
3. 1851 Seated Liberty dime - Kerry S.
4. 1859 Canadian Large cent, holed - Brian T.
5. 1917 S Type 2 Standing Liberty Quarter, valued at \$175 - Mike W.
6. 1886 Seated dime - Dakota P.

WINNER...#3 Rick S.

Entries:

1. Star Clothing Company token, Kalamazoo - Kerry S.
2. 1860 Stephen Douglas Presidential campaign token - Brian T.
3. United States Horseshoe Company watch fob (circa 1917) - Rick S.
4. Unique dog tag, "Mocha" - Mike W.



FOB, BADGE, TOKEN

WINNER...#3 Kerry S.



MOST UNUSUAL

Entries:

1. 1.3 oz. copper nugget from Calumet, MI - Mike S.
2. Mid 1800's solid brass fishing reel crank - Mike W.
3. Lakeshore and Michigan Southern RR button - Kerry S.

FOM notes:

- All items must be found or acquired since the last meeting.
- Multiples must be found in the same hole.
- One entry per category per member.
- Must be a paid member to enter find of the month.
- Write your name on the back of the entry slip.
- Do not look at names on the back of find of the month slips.
- Check with the President or Vice President if you have any questions as to what category to put an item in.

Sept. - Feature - CC Morgan!

October Pot luck

The club will be hosting a Pot luck October 19th with games for prizes!!!

Oct. Meeting

- Pizza Night!!!



- Feature Raffle will be **\$100!!**

**OUTDOOR
YOUTH DAY '24**
BRING YOUR KID. I BE A KID.

10 AM - 2 PM on September 21 at
Charlton Park:

2545 S Charlton Park Rd, Hastings Charter
Twp, MI 49058

We'll have a metal detecting event (location #9
on map) here:

BarryCD.org/oyd

**Please come and support our hobby and
our youth!**

****Raffle Tickets must be purchased before
the beginning of the meeting.***

***You don't have to be a member to purchase tickets
for the Silver Dollar or the 50/50 raffles.*

SWMSS CLUB MEMBER BENEFITS

1. Find of the Month Entries
2. Find of the Year Entry
3. Door Prizes
4. All Raffle's & the Feature Raffle
5. Newsletter, Mail and / or Email
6. Participate in Seeded Hunts
7. * Voting Rights
8. * Fish Bowl Prize (drawing every meeting)
9. Perfect Attendance (Jan. through Dec.) prize
10. To Sell or Trade at the "Buy, Sell & Trade Night".

Exception: *These items are not extended to
associate members.

An "Associate" membership is extended to a paid member's spouse, their children and grandchildren. Anyone 18 years and older are considered an adult and will need to purchase their own membership.

A new member can enter their finds in the "Find of the Month" after 1 full month's membership.**

A "new" member is someone that has never been a member before.

Renewal Memberships are due before the meeting starts to participate in the "Find of the Month".

Club Membership is \$25 for the calendar year (January Through December).

Members, Please, "Sign in" at every club meeting. The "Sign In Book" is used to keep record of perfect attendance for the year. The sign in book is on the table with the name tags.

Be sure to renew your membership before the meeting starts to get in on the drawings and raffles.

****Please note:**

To be guaranteed a photo in the slide show for "Find of the Month", there is a **6:45** cut off time.

Please be mindful of this as Anne and Bradley our photographers most months have 60+ photos to take and incorporate into the slide show for judging. We need to maintain this cutoff if we are to finish in a timely manner and ensure everyone has a chance to compete.

***** If any club members would like to be added to the SWMSS Club Facebook group, please contact Mike Walker or Brian Tobias**



Look us up on the web
www.mytreasureclub.com

I detect...with great frequency - Digging into detector technology

From: Delving into the depths - by Joanna Jan Laznicka - reprinted w/permission

<https://focusspeed.com/how-metal-detectors-work-advanced-technologies-behind-modern-treasure-hunting/>

Metal Detector Technology

Metal detectors employ a range of sophisticated technologies tailored to different detection needs, environments, and target materials. One common technology is Very Low Frequency (VLF), which utilizes two coils; a transmitter coil that emits a low-frequency magnetic field and a receiver coil that detects magnetic anomalies caused by metallic objects. This technology is highly versatile and capable of discriminating between different types of metals based on their conductivity and magnetic permeability.

Samples of Metal Detectors That Are Using Very Low Frequency (VLF) and Single Frequency

- [Nokta Simplex Ultra runs on 15KHz, which is a good general-purpose frequency for relic or park metal detecting](#)
- [Nokta Gold Finder 2000 runs on a much higher frequency of 62kHz, which is better suited for gold prospecting](#)

Pulse Induction (PI) technology is another type, favored for its depth penetration and ability to operate in mineralized environments like saltwater beaches or heavily mineralized soils. PI detectors send powerful, short magnetic pulses into the ground, detecting the decay of the reflection from metal objects. Unlike VLF, PI systems can detect deeper and larger objects, but are less adept at distinguishing between metal types. In areas where hot rocks are problematic, PI (Pulse Induction) metal detectors tend to perform better.

Samples of Metal Detectors That Are Using Pulse Induction (PI) Technology

- [Garrett Axiom](#)
- [OKM Pulse Nova](#)
- [Fisher Impulse-AQ](#)

For highly mineralized environments, Broad Band Spectrum (BBS) technology provides a solution by using simultaneous multiple-frequency transmissions. This allows the detector to capture a broader range of target information, making it highly effective at identifying a wide variety of metal types and sizes under challenging conditions.

Samples of Metal Detectors That Are Multi-Frequency Using BBS Technology

- [Minelab Excalibur 2](#)
- [Minelab Sovereign GT](#)

More advanced detectors incorporate Frequency Modulated Continuous Wave (FMCW) technology, which employs continuous transmission of frequency-modulated waves, "radar." This allows for precise distance and size measurements of metallic objects, enhancing the depth accuracy and metal identification capabilities.

Samples of Metal Detectors That Are Using Frequency Modulated Continuous Wave (FMCW) Technology

- [KS-Analysis KS700](#)

Each of these technologies comes with specific strengths, making them suitable for various metal detecting activities from treasure hunting to security screening, geological surveying, and archaeological explorations. The choice of technology often depends on the specific requirements of the detection task, including the environment, the type of metal sought, and the depth of target objects.

Optimal Frequencies for Detecting Gold Nuggets and Small Gold Jewelry

Choosing the right frequency for metal detecting depends largely on the type of metal you're targeting. For detecting ferrous metals like iron, frequencies of 10 kHz and higher are typically the most effective. If you're searching for gold, frequencies starting at 14 kHz are recommended. For metals such as silver, copper, and brass, a frequency range between 3 kHz and 7 kHz is ideal. Lastly, for finding nickel and aluminum, frequencies between 4 kHz and 8 kHz tend to yield the best results. These guidelines can help you optimize your detector settings to increase your chances of finding specific types of metal.

The Role of Multi-Frequency Metal Detectors:

Multi-frequency metal detectors utilize technology that allows them to operate using several frequencies simultaneously. This capability enables them to be more effective in various soil conditions and more accurate in distinguishing between different types of metal objects.

Advantages of Multi-Frequency Technology:

Versatility: These detectors can be used effectively on different terrains, from highly mineralized soil to saltwater beaches, because some frequencies are better than others, depending on the mineralization of the soil.

Target Identification: By using multiple frequencies, these detectors can better differentiate between ferrous and non-ferrous metals, enhancing target identification and reducing the likelihood of digging up undesirable items.

Depth and Sensitivity: Multi-frequency detectors can detect both small and large targets at greater depths than single-frequency detectors. This is because different frequencies penetrate the ground at different rates and depths.



Look us up on the web
www.mytreasureclub.com